

Napa River Bay Trail Use Regulations

1. Trails and trailhead parking lots open from dawn to dusk only.
2. Stay on designated trails.
3. Pets on leash at all times to protect wetlands wildlife.
4. Pet owners responsible for pet waste.
5. Possession or consumption of alcoholic beverages not permitted.
6. Glass containers not permitted.
7. No smoking.
8. No fires.
9. No firearms and no hunting.
10. Leave wildflowers, plants, trees, wildlife undisturbed.
11. Dispose of litter properly.
12. Leave gates as you find them
13. For your health and safety, no fishing, boating, or swimming in ponds.
14. No motorized vehicles allowed, wheelchairs excepted.
15. Horses not permitted on the Napa River Bay Trail.
16. No person shall use, remain in, or enter a trail when it is posted that the trail is closed due to emergency conditions or maintenance procedures.

HISTORY OF THE WETLANDS

The waters, wetlands and uplands you see along the Napa River Bay Trail are part of an interconnected watershed system that drains into the San Francisco Bay. Before the 1850's, San Francisco Bay had edges with extensive, miles-wide tidal marshes. By the 1950's, nearly 85% of these marshlands had been diked or filled. The low-lying floodplains found in American Canyon include mudflats, tidal and seasonal wetlands, former salt ponds, riparian corridors, and lands reclaimed for agriculture and development. These "baylands" provide habitat for waterfowl, shorebirds, fish and wildlife species.



City of American Canyon



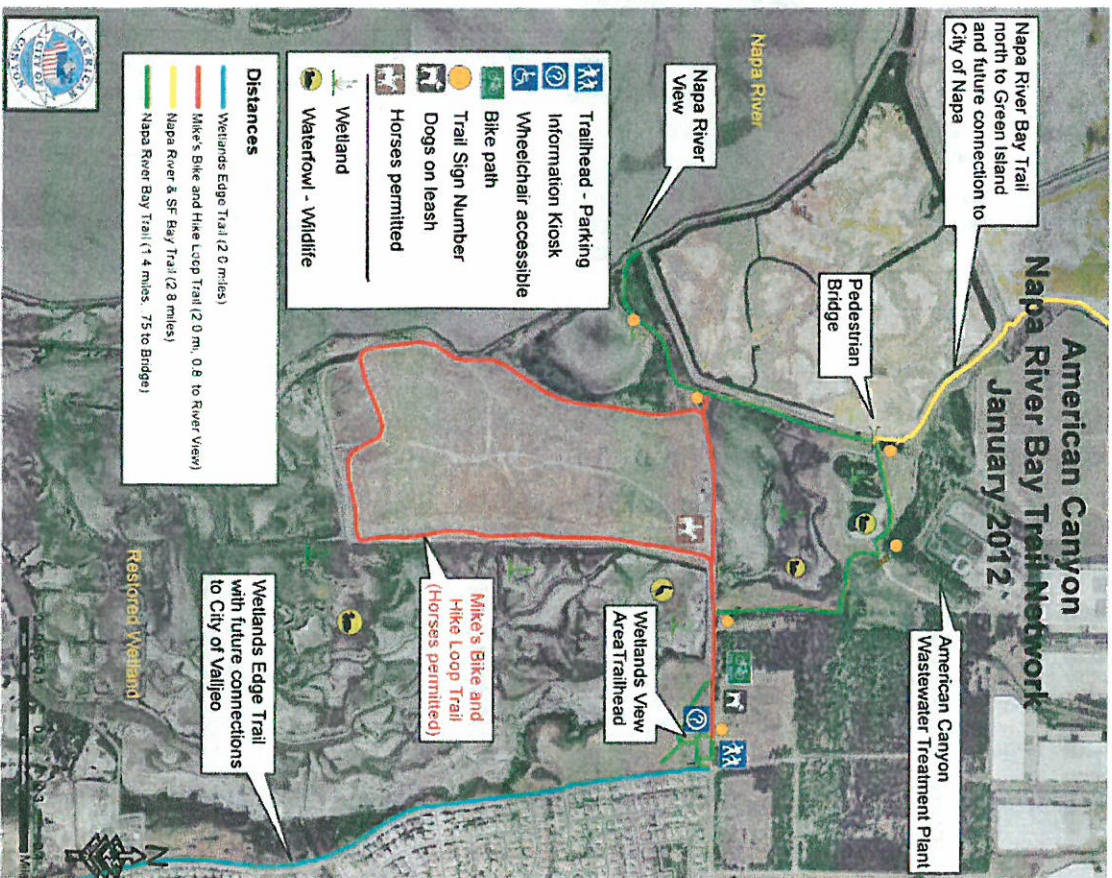
NAPA RIVER BAY TRAIL



The Napa River Bay Trail is located on lands owned by the City of American Canyon and the State of California. The trail is managed by the City of American Canyon. The Napa River Bay Trail provides great views of the wetlands and constructed ponds as well as public access to the Napa River.

The Napa River Bay Trail is a segment of the San Francisco Bay Trail. The Bay Trail is a planned recreational corridor that, when complete, will encircle San Francisco and San Pablo Bays with a continuous 500-mile network of bicycling and hiking trails.

NAPA RIVER BAY TRAIL



This trail belongs to you; the Community, and we would like your input and help monitoring its use. Call us with your suggestions or trail concerns.

Parks and Recreation Department 648-7275
 Emergencies – Call 911
 Police (Non-Emergencies) 253-4451

GETTING TO THE TRAIL

The Wetlands View Area and Napa River Bay Trail Trailhead is located at corner of Wetlands Edge Road and Eucalyptus Drive.

From Napa—Traveling south on Highway 29: Make a right hand turn on Rio Del Mar and an immediate right hand turn on Eucalyptus Drive. Follow Eucalyptus Drive all the way to the Wetlands View Area just past Wetlands Edge Road.

From Vallejo—Traveling north on Highway 29: Make a left hand turn on American Canyon Road and travel west to Wetlands Edge Road. Make a right hand turn on Wetlands Edge Road and make a left hand turn on Eucalyptus Drive.

Don't forget to also enjoy the Wetlands Edge Bay Trail Segment along Wetlands Edge Road from Eucalyptus to Kensington.

**City of American Canyon
 Parks and Recreation
 Department**

City of American Canyon
 Department of Parks and Recreation
 100 Benton Way
 American Canyon, CA 94503
 Phone: 707-678-7275
 Fax: 707-647-4571
www.cityofamericancanyon.org