

## 5.0 SIGNIFICANT IRREVERSIBLE ENVIRONMENTAL CHANGES

Section 15126(f) of the CEQA Guidelines provides that significant irreversible environmental changes which would be involved with a proposed project may include the following:

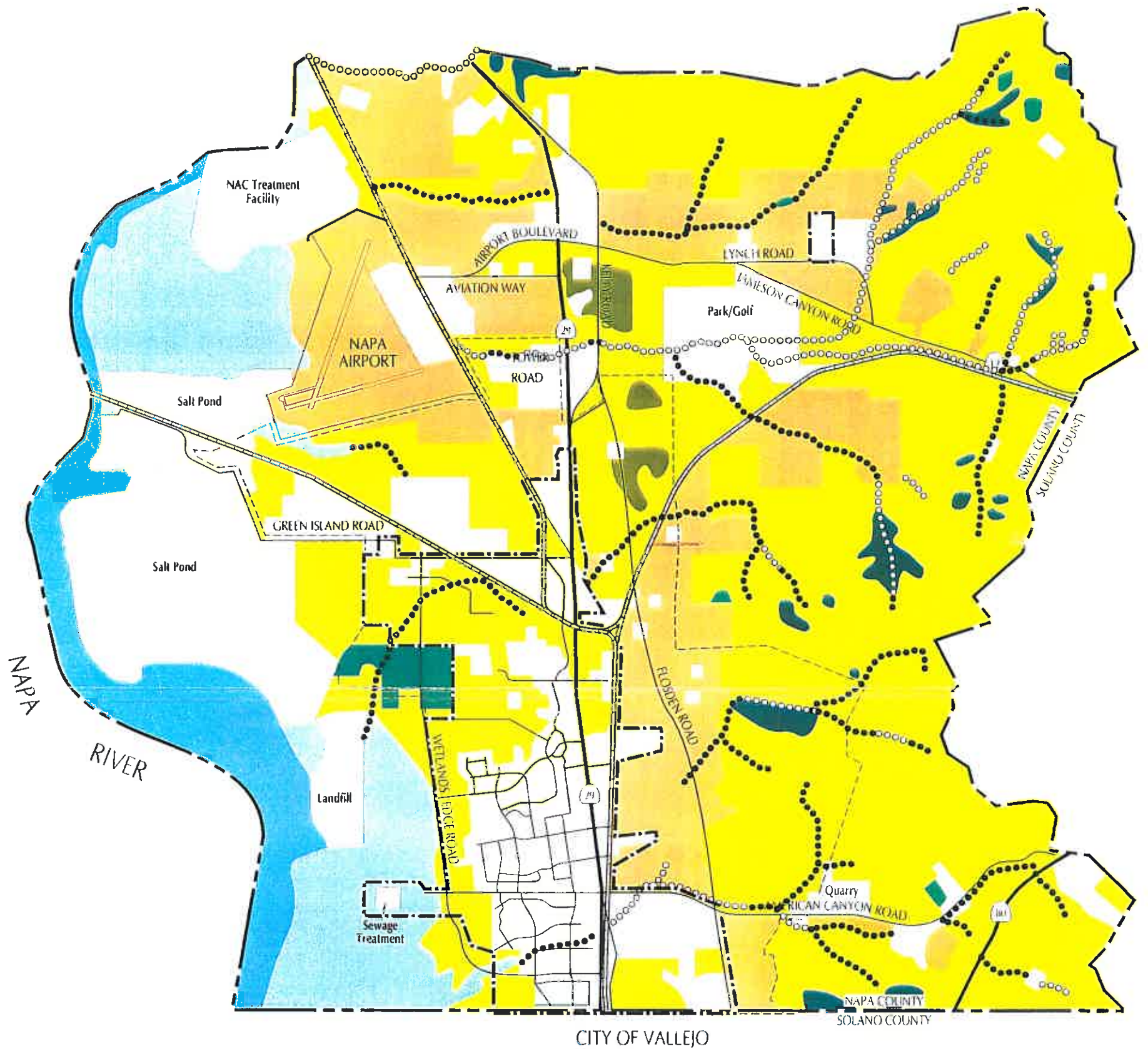
- Uses of nonrenewable resources during the initial and continued phases of the project which would be irreversible because a large commitment of such resources makes removal or non-use unlikely;
- Primary impacts and, particularly secondary impacts which commit future generations to similar uses; and
- Irreversible damage which may result from environmental accidents associated with the project.

The proposed General Plan would allow for growth in the American Canyon Planning Area. Development and occupation of additional homes would require substantial amounts of natural resources and would cause significant irreversible environmental changes. Natural resources which would necessarily be utilized during construction and operation of the development include building material such as lumber, fossil fuels, and water. In addition, as individual developments occur, there would be the irreversible loss of open space and limited loss of wildlife/native plant habitat, further degradation of the ambient air quality and further increase in ambient noise levels. Although these resource commitments and environmental changes will occur gradually, their combined loss can be considered significant and irreversible.

# American Canyon

GENERAL PLAN

CITY OF NAPA



LEGEND

- |  |                                |  |  |
|--|--------------------------------|--|--|
|  | City of American Canyon        |  | Agriculture, including disturbed areas             |
|  | Planning Area                  |  | Mixed Hardwood Forest                              |
|  | Proposed City Urban Limit Line |  | Oak Savannah                                       |
|  | Southern Pacific Railroad      |  | Eucalyptus Forest                                  |
|  | Riverine                       |  | Urbanized, Residential/Commercial/Industrial/Other |
|  | Coastal Saltmarsh              |  | Riparian Woodland/Forest                           |
|  | Coastal Prairie                |  | Other Riparian and Blue-Line Steams                |

SOURCE: Envicom Corporation, 1993

Envicom Corporation Graphics

## BIOLOGICAL HABITATS



FIGURE BR-1