

CITY OF
AMERICAN
CANYON



West Side Connector
Workshop
January 17, 2019

Workshop Outline

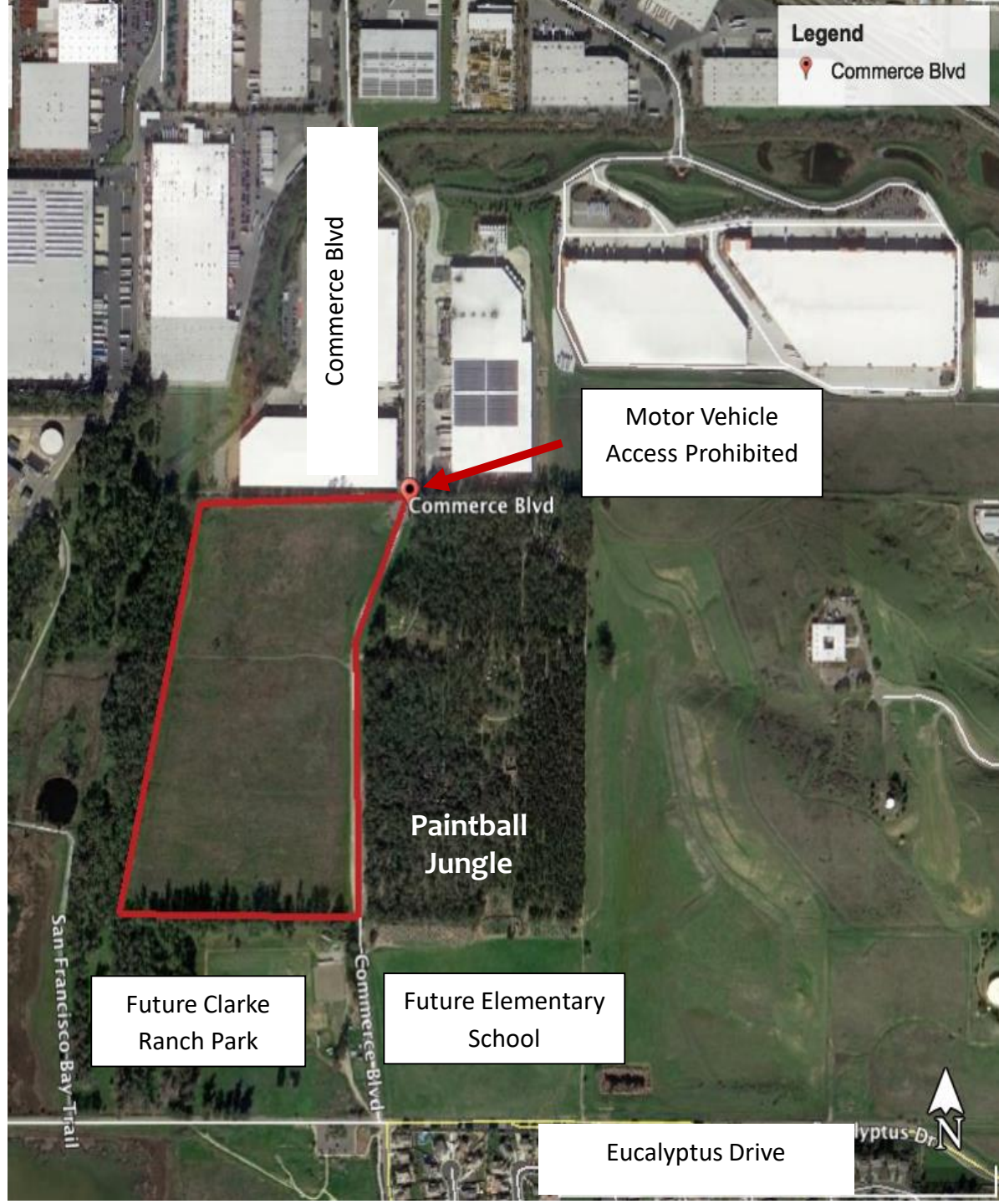
1. “West Side” Development Plans
2. SDG 330
3. New Elementary School
4. Clarke Ranch Park
5. Current General Plan
6. New General Plan
7. Staff Contact
8. Resources
9. Questions and Answers



Today

- Commerce Blvd ends at northern edge of former “Eucalyptus Grove”
- Motor vehicle through traffic prohibited past Commerce Blvd cul-de-sac
- Unimproved gravel roadway through former Eucalyptus Grove

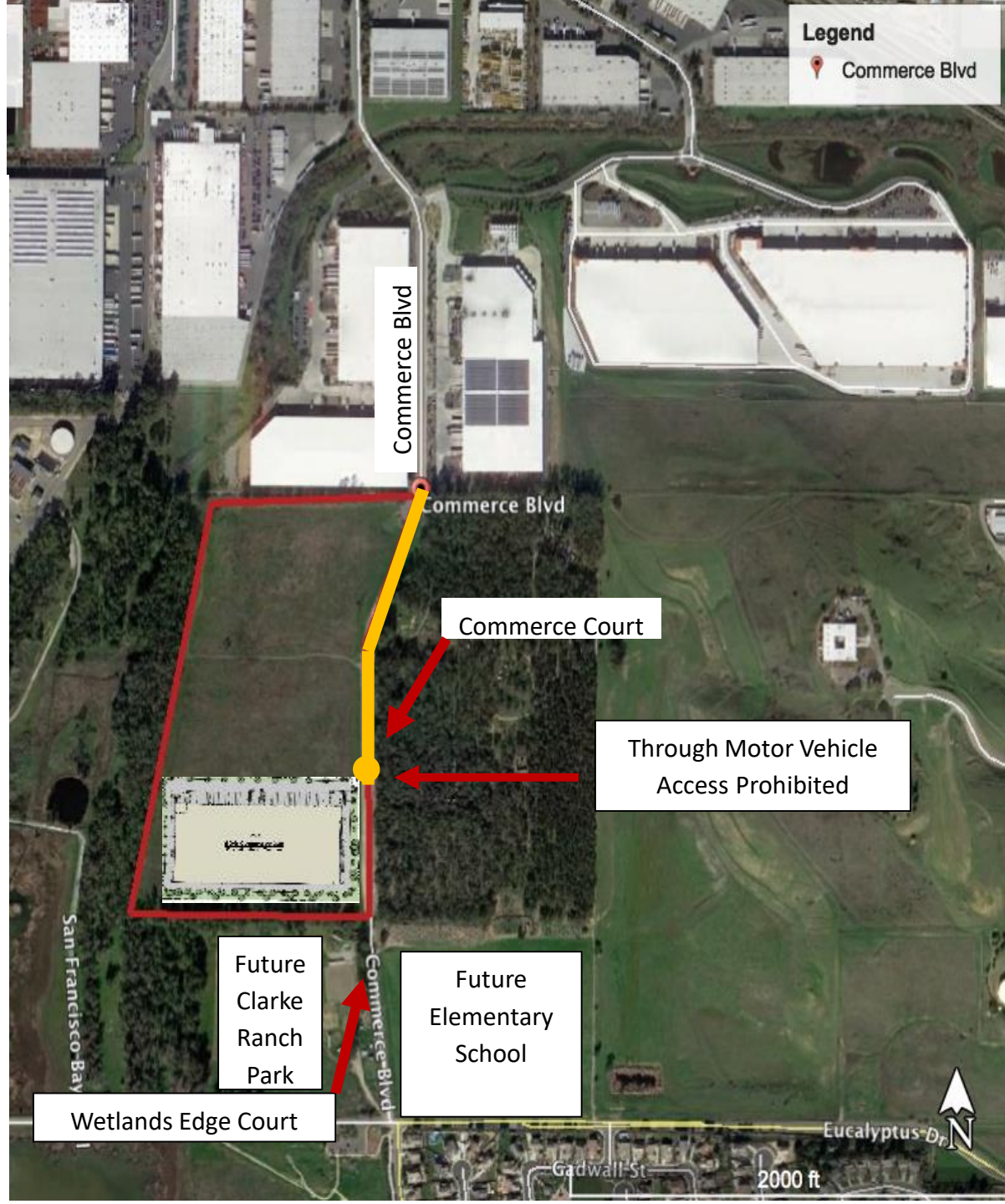
This map is intended to serve the public as a general depiction of the “West Side Connector”. This map DOES NOT constitute legal marking of property lines, etc.



Phase 1 - 2019

- Subdivision of Eucalyptus Grove west side (red outline)
- New Wine Warehouse constructed
- Commerce Court cul-de-sac constructed
- Class 1 (off-street) bicycle trail along east side of warehouse property
- Motor vehicle through traffic prohibited south of Commerce Court cul-de-sac and north of Future Wetlands Edge Court

This map is intended to serve the public as a general depiction of the “West Side Connector”. This map DOES NOT constitute legal marking of property lines, etc.



Phase 2 - 2020

- New Elementary School constructed
- Wetlands Edge Court constructed
- Class 1 (off-street) bicycle trail along
- Motor vehicle through traffic prohibited between Commerce Court cul-de-sac and Wetlands Edge Court cul-de-sac

This map is intended to serve the public as a general depiction of the “West Side Connector”. This map DOES NOT constitute legal marking of property lines, etc.

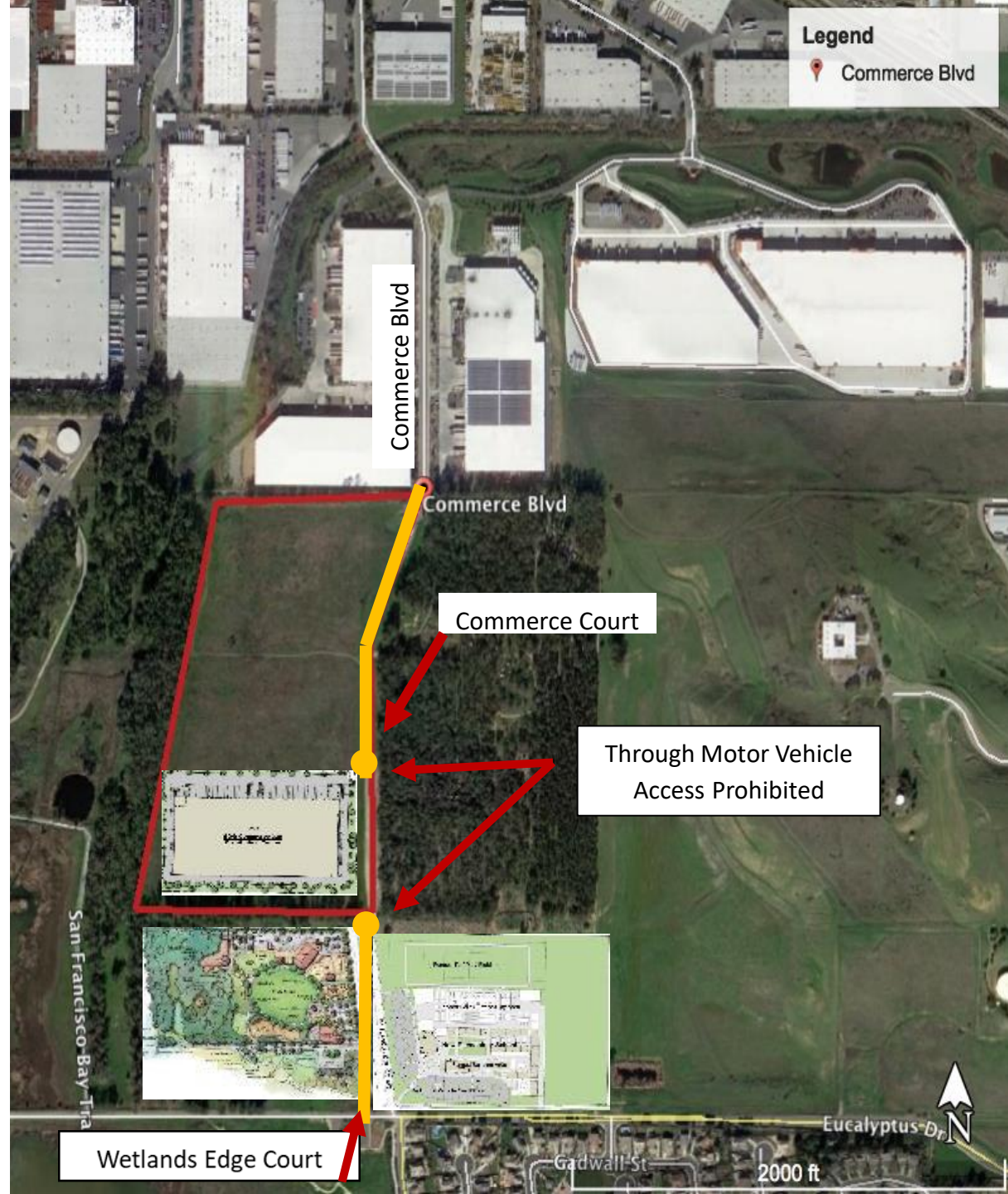


Phase 3

TBD, 3-5 years

- Clarke Ranch Park constructed
- Motor vehicle through traffic prohibited between Commerce Court cul-de-sac and Wetlands Edge Court cul-de-sac

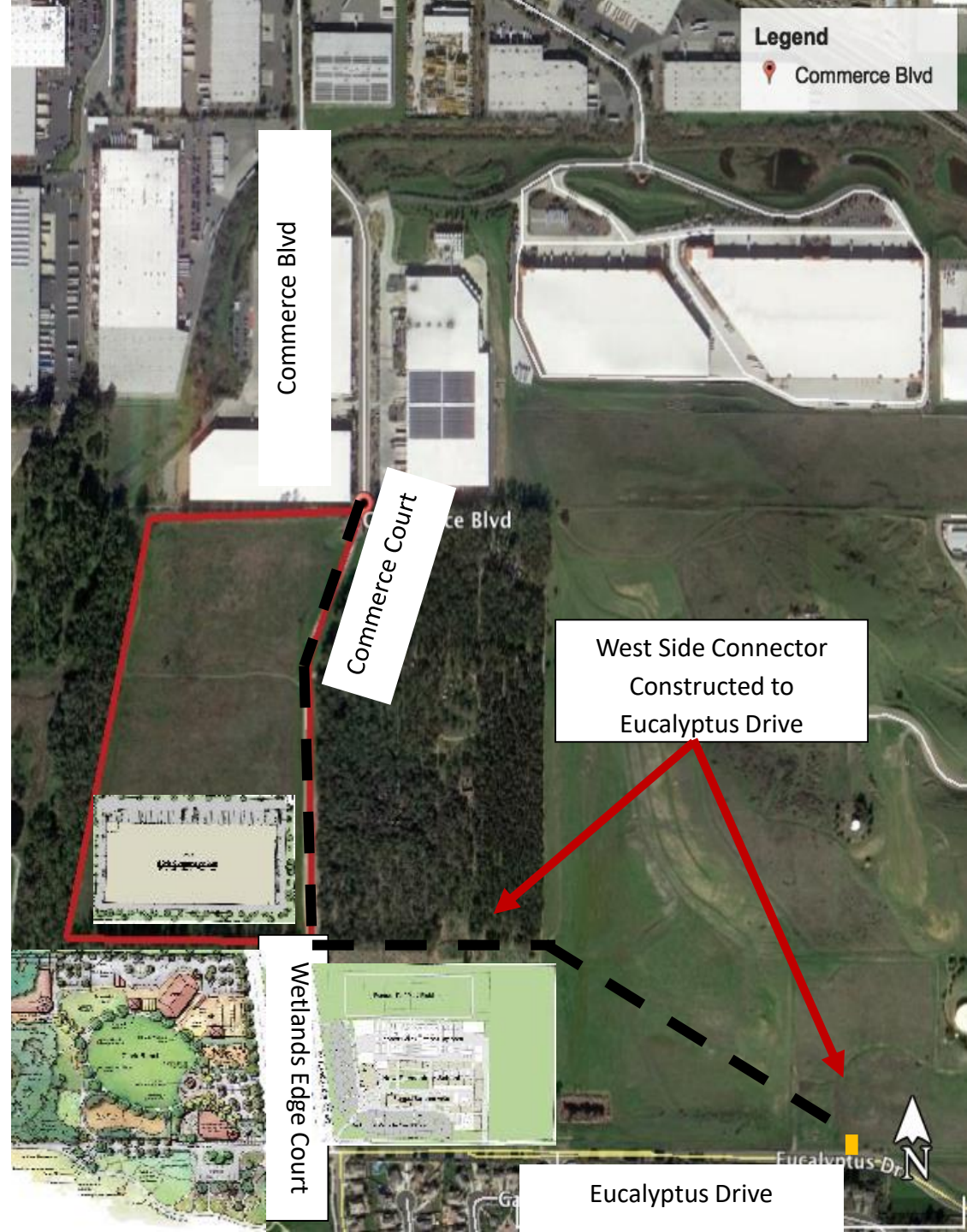
This map is intended to serve the public as a general depiction of the “West Side Connector”. This map DOES NOT constitute legal marking of property lines, etc.



Current General Plan

- Long-Term Plan (Post 2025)
- A “West Side Connector” is constructed to connect with Eucalyptus Drive
- No funding for this road improvement
- No connection to Wetlands Edge Court
- No through-traffic north of Wetlands Edge Court

This map is intended to serve the public as a general depiction of the “West Side Connector”. This map DOES NOT constitute legal marking of property lines, etc.



Future General Plan

Commerce Blvd

Highway 29

West Side Connector
Alternatives
????????????????????

Through Motor
Vehicle Access
Prohibited



How to Participate

1. Stay tuned for General Plan update information (NextDoor, Facebook, City Manager Update)
2. Sign up for a future Citizens Academy session
3. Contact staff (Steve Hartwig and Brent Cooper)
4. Attend the City Council (1st & 3rd Tuesday each month) and Planning Commission (4th Thursday each month) meetings
5. Attend the State of the City (February 20, 2019)
6. Respond to mailed notices



Resources

1. Website www.cityofamericancanyon.org
2. General Plan <https://bit.ly/2VZsufv>
3. City Council Meeting Agendas <http://bit.ly/2RSvMBZ>
4. Planning Commission Meeting Agendas <https://bit.ly/2FzIglV>
5. City Manager's Friday Update <https://bit.ly/2swSbX9>
6. Citizens Academy Information <http://bit.ly/2ARGLIA>
7. State of the City <http://bit.ly/2RWw4l4>



Staff Contact

Brent Cooper, AICP

Community Development Director

bcooper@cityofamericancanyon.org

(707) 647-4335

Steve Hartwig, P.E., T.E.

Public Works Director

shartwig@cityofamericancanyon.org

(707) 647-4366



CITY OF
AMERICAN
CANYON



Questions & Review