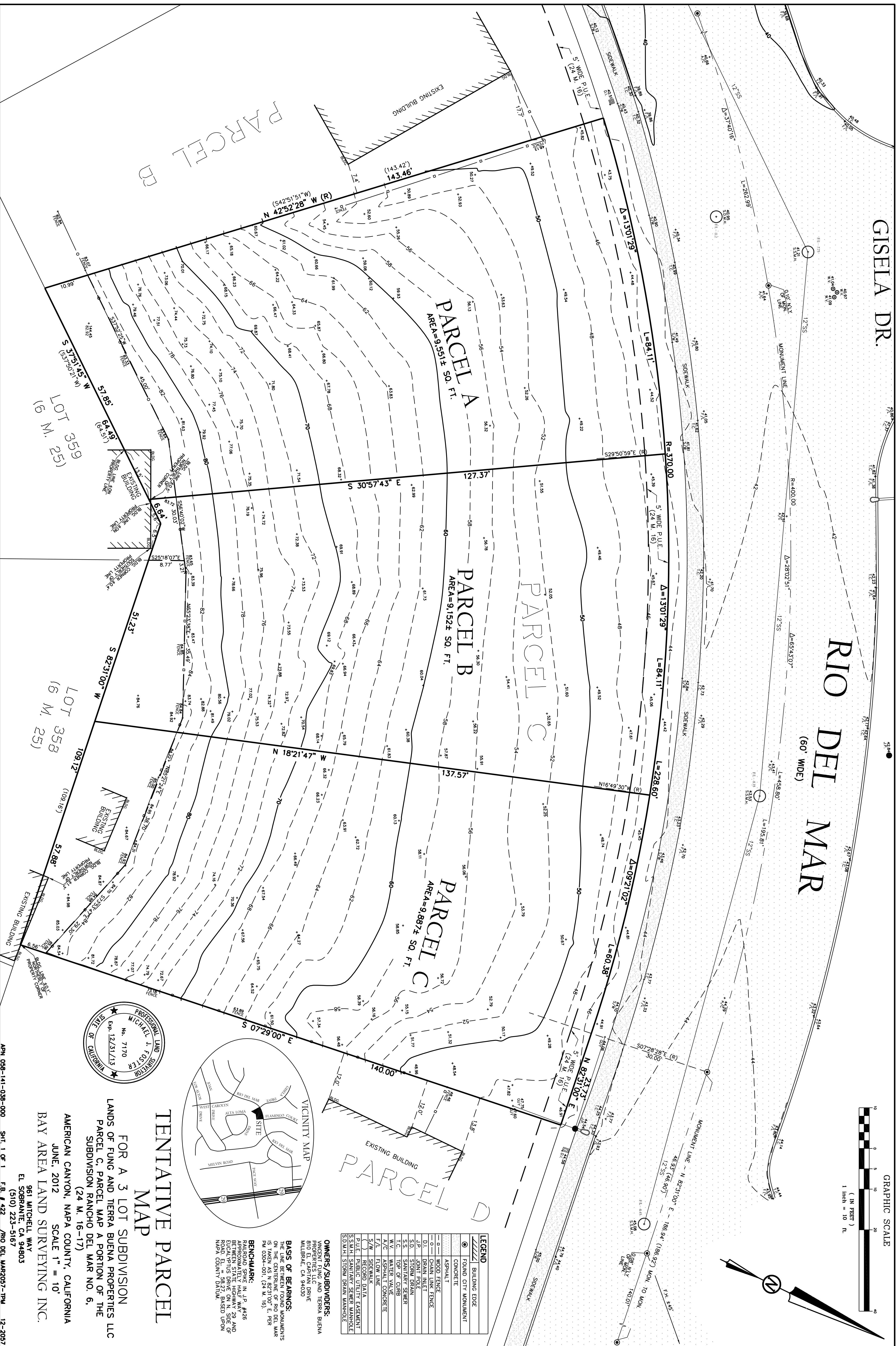
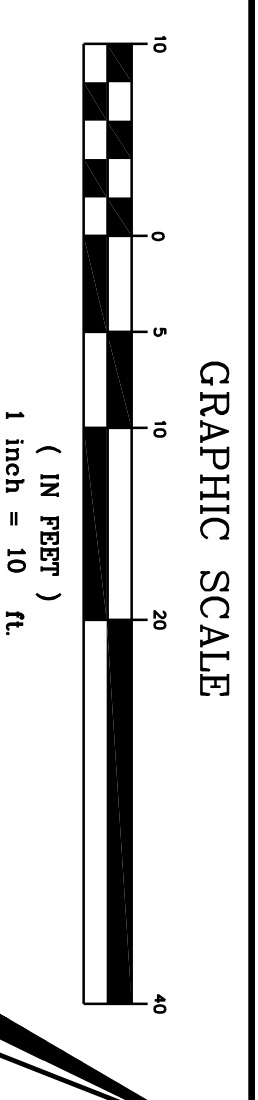


GISELA DR.

RIO DEL MAR

(60' WIDE)

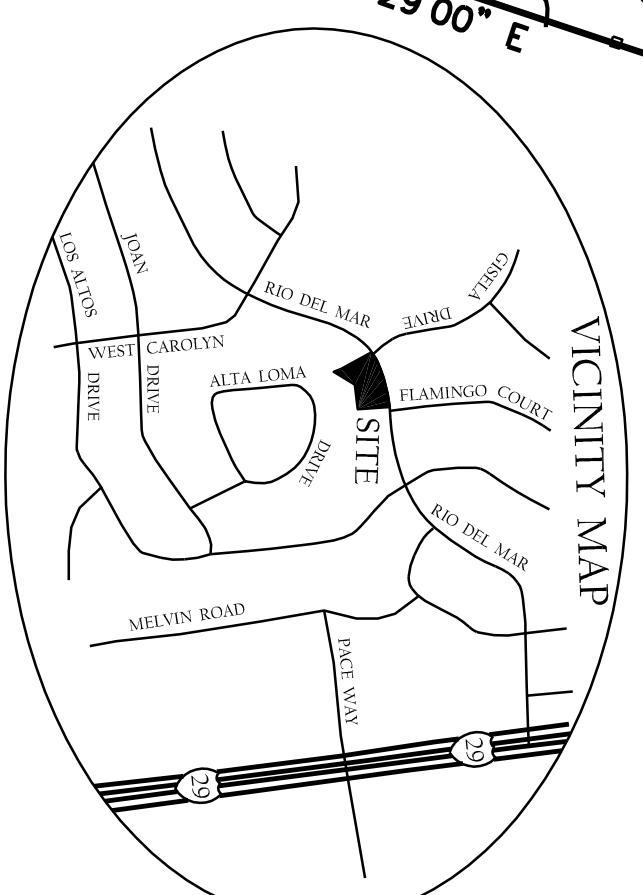


LEGEND	
	BUILDING EDGE
	FOUND CITY MONUMENT
	CONCRETE
	ASPHALT
	WOOD FENCE
	CHAIN LINK FENCE
	DRAIN PIPE
	SANITARY SEWER
	TOP OF CURB
	WATER VALVE
	ASPHALT CONCRETE
	FLOW LINE
	SIDE WALK
	PUBLIC UTILITY EASEMENT
	SANITARY SEWER MANHOLE
	STORM DRAIN MANHOLE

OWNERS/SUBDIVIDERS:
VANGUARD LAND AND TIERRA BUENA PROPERTIES, LLC
810 EL CAPITAN DRIVE
MILLBRAE, CA 94030

BASES OF BEARINGS:
THE BEARINGS FOR MONUMENTS ON THE CENTERLINE OF RIO DEL MAR IS TAKEN AS N 82°31'00" E PER PM 0304-001, (24 M. 16).

BENCHMARK:
RAILROAD SINK IN J.P. #426 BETWEEN STATE HIGHWAY 28 AND ROAD. ELEVATION 582.27 BASED UPON NAPA COUNTY DATUM.



TENTATIVE PARCEL MAP

FOR A 3 LOT SUBDIVISION
LANDS OF FUNG AND TIERRA BUENA PROPERTIES LLC
PARCEL C, PARCEL MAP A PORTION OF THE
SUBDIVISION RANCHO DEL MAR NO. 6,
(24 M. 16-17)

AMERICAN CANYON, NAPA COUNTY, CALIFORNIA
JUNE, 2012
SCALE 1" = 10'

BAY AREA LAND SURVEYING INC.
961 MITCHELL WAY
EL SOBRANTE, CA 94803
(510) 223-5167

