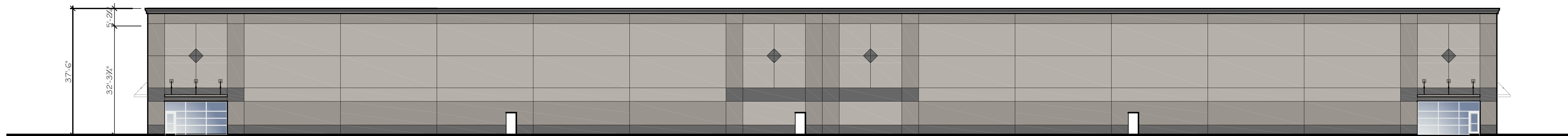


EAST / WEST ELEVATION

1/8" = 1'-0"




NORTH / SOUTH ELEVATION

1/8" = 1'-0"

- GLIDDEN PROFESSIONAL A1858 - WOOD SMOKE
- GLIDDEN PROFESSIONAL A1781 - WAYSIDE INN
- GLIDDEN PROFESSIONAL A1832 - MANSARD STONE

REVISIONS	BY

Leo McGlade & associates, inc.
 3417 Arden Way Sacramento, CA 95825 (916) 488-8360



ELEVATIONS

PROPOSED BUILDING
 GREEN ISLAND ROAD & JIM OSWALD WAY
 AMERICAN RIVER CANYON, CALIFORNIA

Date
 Scale AS NOTED
 Drawn R.J.
 Job 16-12-01
 Sheet
A2